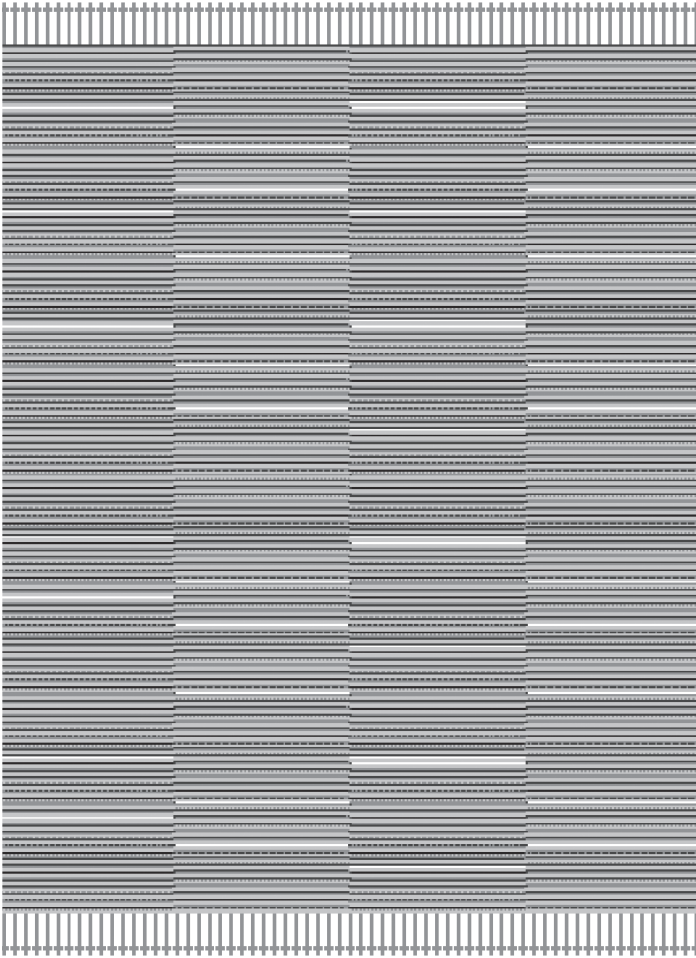


ZAK+FOX



BAHU

CONTENT

50% wool
24% hemp
24% linen
1% nettle
1% silk

CONSTRUCTION

handwoven

PILE HEIGHT

flat with 4mm loops
in pattern

EDGE FINISHING

hand-bound edges with
3 1/2" wool fringe

MAX WIDTH

35'

MAX LENGTH

50'

HANDMADE IN

Nepal

CARE

spot clean

USE

low traffic



TO NOTE

This is a handmade rug woven with natural fibers. Placing this in direct sunlight may affect its color or cause fading to occur. Minor variations in size, design and color are to be expected and are a hallmark of its craftsmanship. Handmade products may be subject to a shift in sizing, plus or minus 3%.

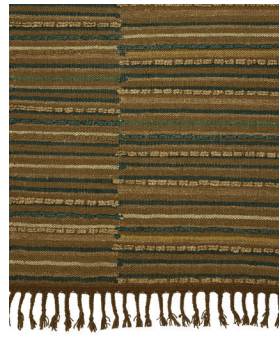
CAD scaled to 8' width x 10' length dimensions.



ZFBHURW-01



ZFBHURW-02



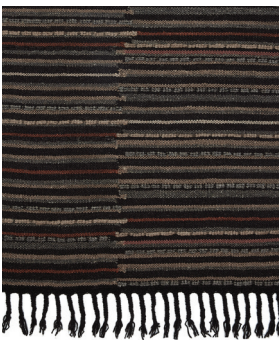
ZFBHURW-03



ZFBHURW-04



ZFBHURW-05



ZFBHURW-06