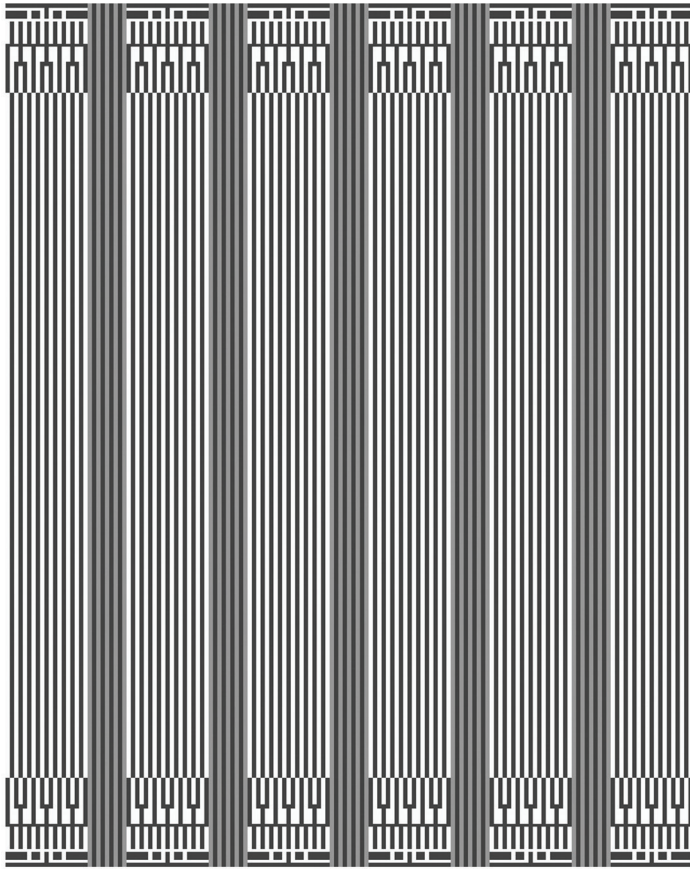


ZAK+FOX

DORIC

**CONTENT**

80% new zealand wool
20% cotton

CONSTRUCTION

handwoven

PILE HEIGHT

flat

EDGE FINISHING

hand-bound edges

MAX WIDTH

20'

MAX LENGTH

30'

HANDMADE IN

India

CARE

professional

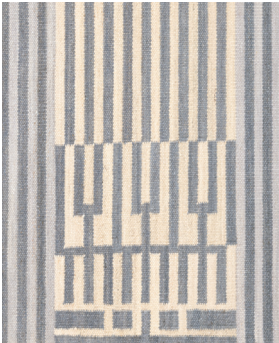
USE

medium traffic

**TO NOTE**

This is a handmade rug woven with natural fibers. Placing this in direct sunlight may affect its color or cause fading to occur. Minor variations in size, design and color are to be expected and are a hallmark of its craftsmanship. Handmade products may be subject to a shift in sizing, plus or minus 3%.

CAD scaled to 8' width x 10' length dimensions.



ZFDRCRW-01



ZFDRCRW-02



ZFDRCRW-03