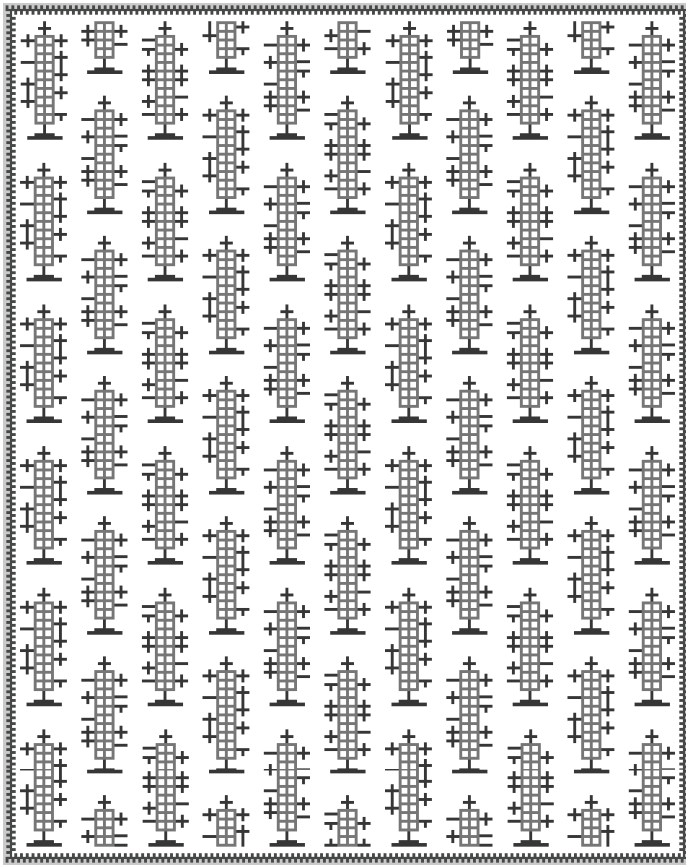


ZAK+FOX

SILVA



CONTENT
100% new zealand wool

CONSTRUCTION
handwoven

PILE HEIGHT
flat

EDGE FINISHING
hand-bound edges

MAX WIDTH
20'

MAX LENGTH
30'

HANDMADE IN
India

CARE
spot clean

USE
medium traffic



TO NOTE

This is a handmade rug woven with natural wools. Minor variations in size, design and color are to be expected and are a hallmark of its craftsmanship. Handmade products may be subject to a shift in sizing, plus or minus 3%.

CAD scaled to 8' width x 10' length dimensions.



ZFSILRW-01



ZFSILRW-02